

Customer and Supplier Information

March 2022

Hello, I am #CARLLota

Dear Business Partner,

we have offspring again, it's a girl!

In cooperation with our customers, we looked for new opportunities to check grinded roll surfaces for imperfections. Our employees from the innovation teams have developed a solution that we call **#CARLLota**:

Laser Optical Test and Assessment

We guide a laser system in a defined pattern over the roll surface and use an algorithm to identify defects in the roll surface. The system can be parameterized and can therefore examine almost all rolls with regard to the required properties.

The example in the video shows a drying cylinder (**#KSD – KRAFFT Steel Dryer**) with a bale length of approx. 10 m. The surface is checked 100% in about 30 minutes. In doing so, we generate several 10-million pixels that are archived for later checks.



Watch the whole video on our YouTube channel:

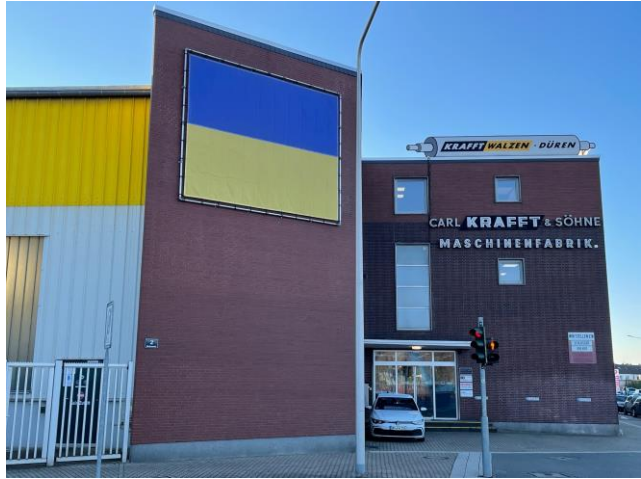
<https://www.youtube.com/channel/UCmOARE3VNquETnDztL8cDLQ>

#CARLLota is related to the **#CARL** sensor family (Computer Aided Roller Logger) and **#CARLexa**, which we presented in the last newsletter.

Please allow us this comment.

The unbelievable things that are currently happening in Eastern Europe leave us speechless.

Out of solidarity, we have placed the Ukrainian flag on the company building a few days ago: "Even if we cannot end this war, we can still send a signal!"



All our e-mails currently wear this simple message:



With kind regards from your KRAFFT team in Düren – stay healthy and safe.

About KRAFFT:

KRAFFT is one of Europe’s leading manufacturers of and specialists for rotationally-symmetric components. The knowledge gained from building plants for the production of paper and cardboard was consequently aligned to new products and product segments:

- KRAFFT Rollers – KRAFFT Walzen** is the company’s flagship brand for rollers, cylinders and drums
- KRAFFT Pulleys** pulleys for the conveyance of bulk materials as a drive, tensioning and deflection drum in conveyor belt systems
- KRAFFT Turning Technologies** turning parts and large turning parts are used in plant construction and engineering, shafts and mandrels
- KRAFFT Engineering** Engineering and projecting, turn-key systems
- KRAFFT Services** service and maintenance, repair, assembly

For more information please contact:
Carl KRAFFT & Söhne GmbH & Co. KG
Peter Kayser, MD Technical Department and Sales
Schoellerstrasse 164
52351 Düren, Germany
E-Mail: Peter.Kayser@krafft-walzen.com

